

**GRAM PANCHAYAT**

**DHOKE WAZIRAN**

**BLOCK NAGROTA**

**JAMMU**

# IN HOUSE PRODUCTION AT



# BLOCKS CONSTRUCTION IN PROGRESS





# DISPOSING PLASTIC

# THE EASIEST



# &

# HEALTHY WAY

# HIGHLIGHTS

- INCOME GENERATING TOWARDS OSR
- EMPLOYMENT GENERATING
- PLASTIC DISPOSAL AT SOURCE
- SELF SUSTAINING
- DEVELOPMENT WITH PLASTIC
- LONG LASTING
- EASIEST WAY
- NO BIG CAPITAL INVESTMENT
- NO SKILLED LABOUR
- DISPOSAL QTY CAN BE INCREASED AS PER REQUIREMENT

# CONCRETE HOLLOW BLOCKS



# INSIDE OUTSIDE

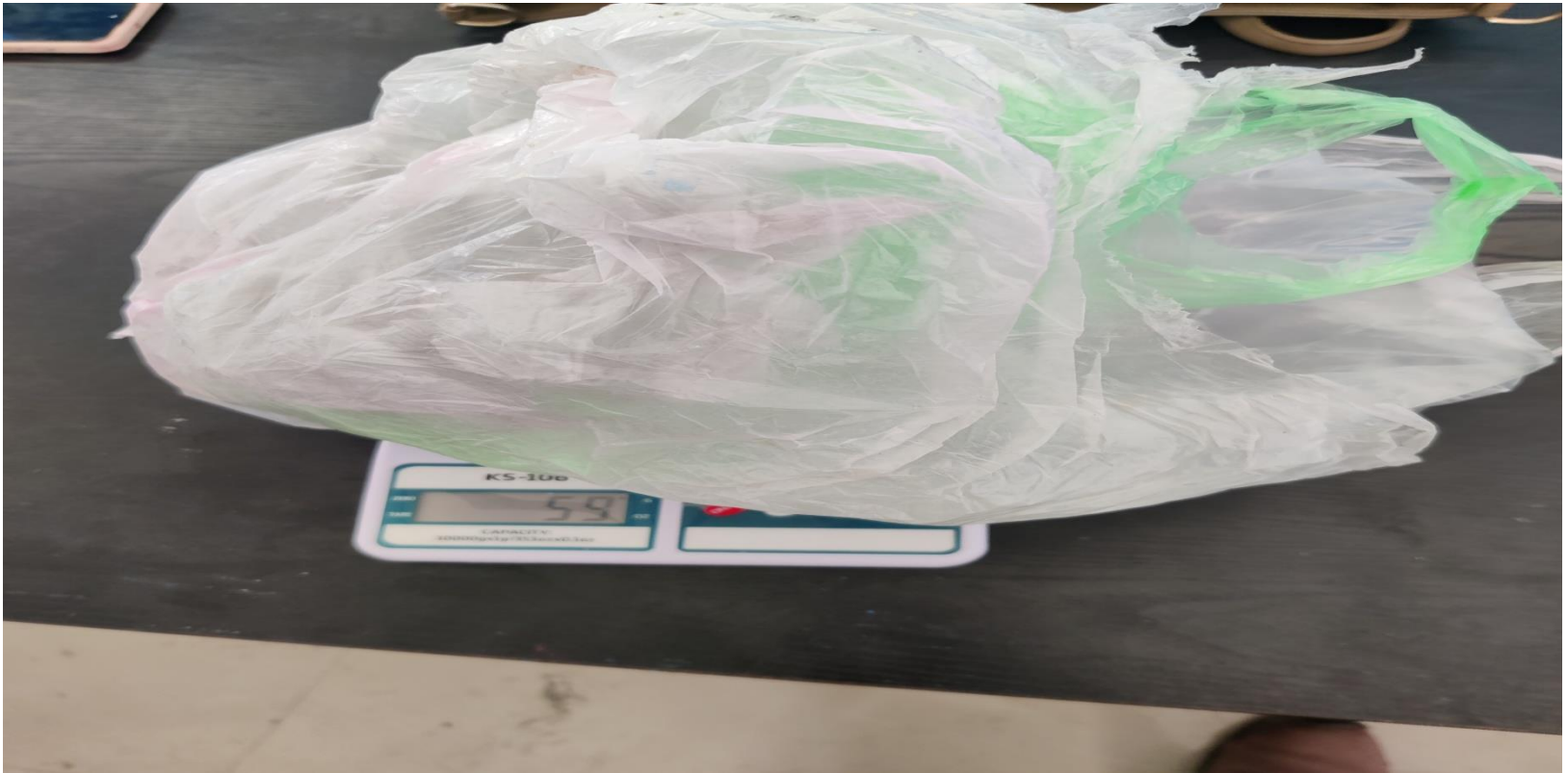
- THE PRESENT BLOCK IS 8 INCHES IN HEIGHT
- 14 INCHES IN LENGTH
- 2 SECTIONS WITH 8 INCHES DEPTH
- BLOCK CAVITY, CAN HOLD 150 GMS OF PLASTIC
- 150 GMS OF PLASTIC IN EACH HOLLOW BLOCK





# PLASTIC CONSUMPTION

- A SINGLE BLOCK HOLE CAN HOLD APPROXIMATELY 150 GMS OF PLASTIC





# MAKING OF BLOCK

- THESE BLOCKS CAN BE MADE BY UNSKILLED LABOUR WITH LITTLE GUIDANCE AND CAN BE USED IN ALL PANCHAYAT CONSTRUCTIONS, PATHWAYS, PROTECTION WALLS, LANES DRAINS, WALLS, PARTITIONS, WHEREVER



# A SINGLE BLOCK HOLE WITH 60 GMS OF PLASTIC

- ONE SINGLE BLOCK WOULD HOLD APPROXIMATELY 150 GMS OF WASTE PLASTIC



# OBJECTIVE

- PANCHAYATS CAN SELL THESE BLOCKS, ADDING OSR.
- ENGAGE LOCAL PERSONS AND PROVIDE EMPLOYMENT TO AS MANY PERSONS AS PER PRODUCTION.
- SELF SUSTAINING NO BIG FINANCIAL ASSISTANCE REQD.
- DISPOSAL OF PLASTIC AT SOURCE , NO NEED TO CARRY PLASTIC FROM ONE PLACE TO ANOTHER.
- SAVES TIME & MONEY.
- EASIEST WAY TO DISPOSE OFF PLASTIC.
- NO ENVIRONMENTAL POLLUTION.



# DESIRED

- EVERY PANCHAYAT TO WORK IN COORDINATION WITH BLOCK OFFICE
- USE BLOCKS IN ALL OR MAXIMUM WORKS
- ENGAGE LOCAL IN MANUFACTURING
- GENERATE EMPLOYMENT
- CONTRIBUTE TOWARDS OSR
- GET RID OF PLASTIC
- PLASTIC FREE PANCHAYATS
- SAVE MONEY & TIME
- EARN PROFITS

# PLAN AT A GLANCE

- TOTAL PANCHAYATS = 4291
- OPERATIONAL PANCHAYATS = 4082
- CONST WORK WHERE BLOCKS CAN BE USED =SAY 4000 PANCHAYATS
- EACH PANCHAYAT TO MAKE AND USE 5000 BLOCKS APPROX IN ONE FINANCIAL YEAR
- 1 BLOCK TO USE 150 GMS PLASTIC
- 5000 BLOCKS TO USE 750000 GMS OF PLASTIC
- SAY 750 KGS PER PANCHAYAT
- 4000 PANCHAYATS X 750 KGS PLASTIC = 3000000 KGS PLASTIC USED

# WHERE TO USE

- WALLS , LANES , DRAINS, ROADS, PROTECTION WORKS, STAIRS, ETC ETC.





# RESULTS

- **WE ARE STARTING**



- **WHAT ABOUT YOU**

# TARGET NO PLASTIC

